

The following samples were collected
from JFK Library rooms:

- Middle Level
- Upper Level

Date, April 25th

LABORATORY REPORT

TO: Chad Johnson
 EWU, EH+S
 002 Martin Hall
 Cheney, WA 99004

PHONE: (509) 359-6455 **FAX:** (509) 359-4690 **E-MAIL:** djohnson@ewu.edu
SUBJECT: Particle Identification
SPECIMEN: Four Set of Tapelifts
REFERENCE: JFK

INTRODUCTION

Four sets of three tapelifts each was received for analysis.

<i>Sample ID</i>	<i>Description</i>	<i>Analysis/Date Collected</i>
WC	Center Top of Mont	PI 4/25/19
H1	Top of Wood Divider	
AP-2	Top of Wood Divider	
M17-1	Windowsill 2 From Door Center	PI 4/25/19
M17-2	Bookcase by White Bd from Top	
M17-3	Bookcase for End Above Lower Shelves	
U12G	Table Top by Fire Exit Outer Wall	PI 4/25/19
U12H	Top of Right Mont	
U12I	Top of Black Cab	
U12J-1	On Counter by Side Door	PI 4/25/19
U12J-2	On Counter in Center of Bench	
U12J-3	On Counter far Side	

mont = monitor Cab = Cabinet

The tapelifts were placed on clean microscope slides and immersed in acetone for about two hours and then removed. The slides with the tapelifts were rinsed with clean acetone as they were removed from the immersion tank. The tapelifts were allowed to dry for twenty minutes in a laminar flow Clean Work Station and then mounted using a synthetic resin (Shurmount). The completed mounts were analyzed using analytical light microscopy. The materials identified are listed in decreasing order of frequency, the most common materials first. The significance of a material's location in the list is not necessarily related to its health impact because some materials have a greater health impact at low levels than other materials do at high levels.

RESULTS

<i>Sample ID</i>	<i>Description</i>	<i>Glass Fibers</i>	<i>Particle Summary</i>
WC	Center Top of Mont	1	Skin Flakes, Clothing Fibers, Starch, Fungal Spores, Natural Minerals, Paper, Bird Feather Barbules
H1	Top of Wood Divider	0	Skin Flakes, Clothing Fibers, Natural Minerals (Low Particle Loading)
AP-2	Top of Wood Divider	1	Skin Flakes, Clothing Fibers, Natural Minerals, Plant Debris, Starch
M17-1	Windowsill 2 From Door Center	4	Skin Flakes, Natural Minerals, Plant Debris, Pollen, Feather Barbules, Silica Phytoliths <i>Short Glass fibers 3, Long Glass Fibers 1</i>
M17-2	Bookcase by White Bd from Top	0	Skin Flakes, Starch, Clothing Fibers, Minerals, Spores, Silica Phytoliths, Ink
M17-3	Bookcase for End Above Lower Shelves	0	Skin Flakes, Clothing Fibers, Spores, Insect Debris, Feather Barbules, Silica Phytoliths
U12G	Table Top by Fire Exit Outer Wall	0	Skin Flakes, Clothing Fibers, Ink (Low Particle Loading)
U12H	Top of Right Mont	2	Skin Flakes, Starch, Clothing Fibers, Spores, Paint
U12I	Top of Black Cab	0	Skin Flakes, Clothing Fibers, Paper Fibers, Plant Debris, Starch
U12J-1	On Counter by Side Door	0	Skin Flakes, Clothing Fibers, Natural Minerals, Paint
U12J-2	On Counter in Center of Bench	1	Skin Flakes, Natural Minerals, Clothing Fibers, Paint
U12J-3	On Counter far Side	0	Skin Flakes, Clothing Fibers, Natural Minerals, Paper Fibers

The particles typically seen on these tapelifts included skin flakes, paper fiber, clothing fiber, natural minerals, plant parts, tire wear, starch, pollen, plant material, fungal spores, cosmetics, feather barbules, wear metals, silica phytoliths, and glass fiber.

Five out of the twelve samples contained a total 8 short glass fibers (less than 50microns in length) and 1 long glass fiber. Sample M17-1 did not meet the 2 glass fibers per square inch clearance requirement. 13 short glass fibers and 4 long glass fibers per square inch is associated with health complaint. All the samples contained normal to low particle loading.

CONCLUSION

Nine out of the twelve samples contained a total 45 short glass fibers (less than 50microns in length) and 1 long glass fiber. Sample M17-1 did not meet the 2 glass fibers per square inch clearance requirement. All the samples contained normal to low particle loading.

Thank you for this opportunity to be of service. If I can provide any further assistance, please contact me.

Signed: Heidie Crutcher
 Heidie Crutcher, Analyst

Signed: E. R. Crutcher
 E. R. Crutcher, Consultant

CHAIN OF CUSTODY RECORD

Company: Eastern Washington University
 Contact: Chad Johnson
 Address: FAE 232 on main Hill
Cheney WA 99004

MicroLab Northwest
 7609 140th PL NE, Redmond, WA 98052
 Phone: (425) 885-9419

MLNW LOG #

133-19

Phone: 509 359 6455 FAX: _____
 E-Mail: DJohnson@EWU.EWU
 PO#: _____ Job Reference: JFK
 PRIORITY: 24 hour One Week (CIRCLE ONE)
 Four Weeks

SAMPLE ID	DESCRIPTION	ANALYSIS REQUESTED	Collected	
			Date	Time
INC	Wipers upper top of front	Particle ID	4/25	
H1	In pens/desk top of work divider		4/25	
AP-2	Top of wood divider in Periodicals New 3 zone system		4/25	
M17-1	Window sill 2 from clear center	Particle ID	4/25	
M17-2	Book case by water table rail from top		4/25	
M17-3	Book case for end above lower shelves		4/25	
U12G	Table top by fire exit outer wall	Particle ID	4/25/	
U12H	Top of Aug 47 front		4/25	
U12I	Top of black cab		4/25	
U12J-1	on counter by side door	Particle ID	4/25	
U12J-2	on counter in center of bench		4/25	
U12J-3	on counter far side		4/25	

Relinquished By: Chad Johnson Date/Time: 5/1/09
 Received By: _____ Date/Time: _____
 Relinquished By: _____ Date/Time: _____
 Received By: _____

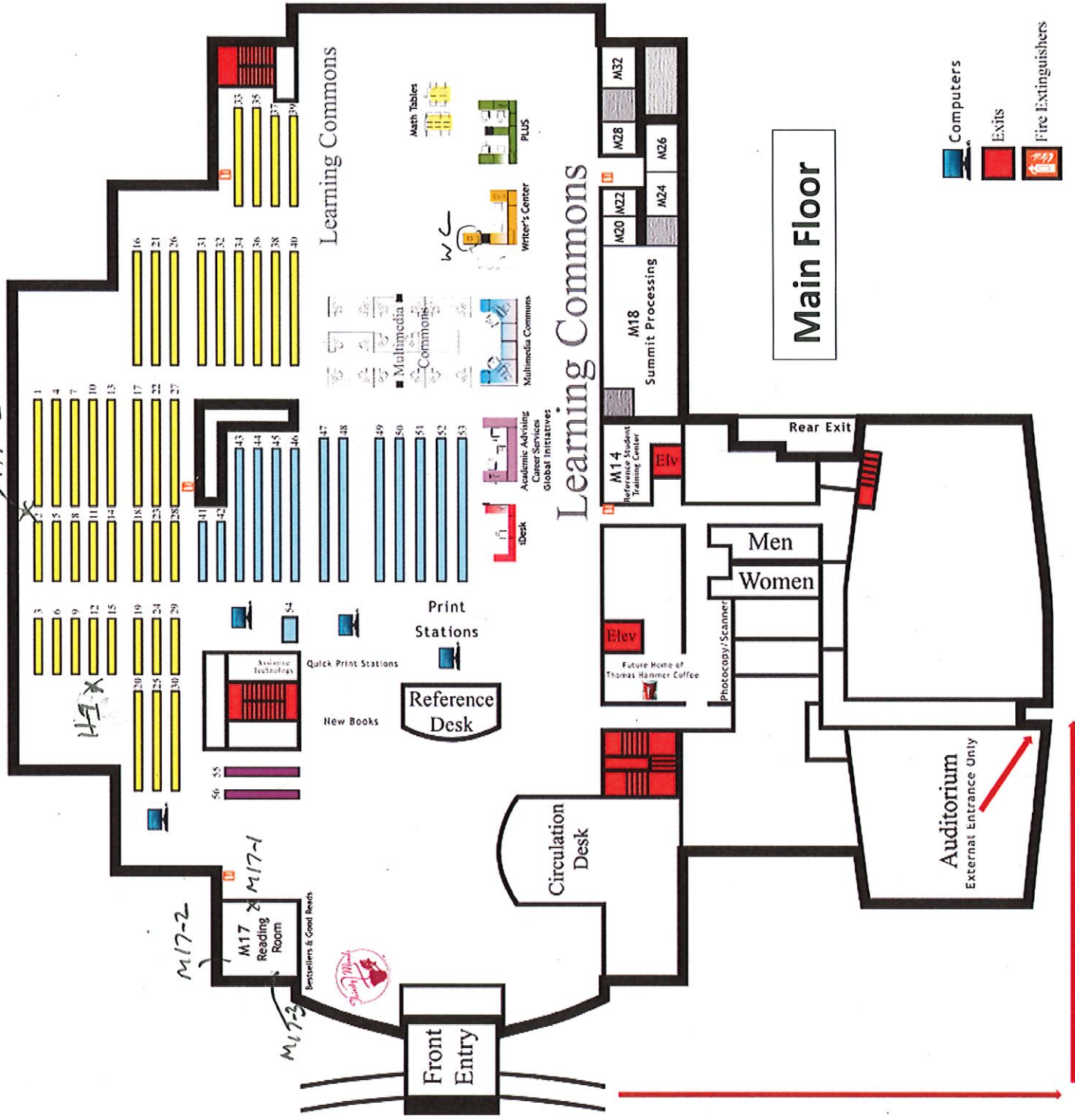
AP-2

HA-X

M17-2

M17-1

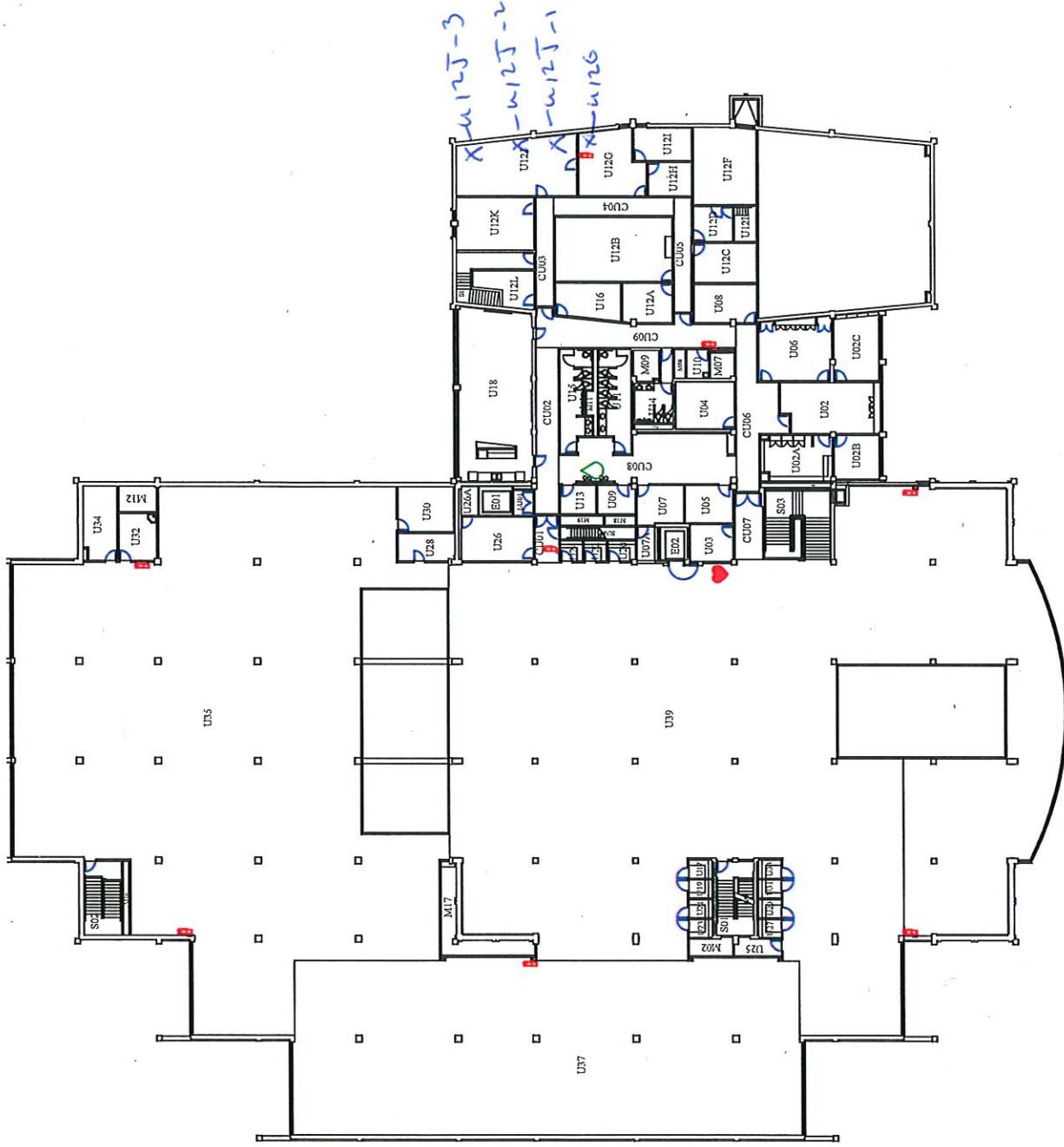
M17-3



Main Floor

- Computers
- Exits
- Fire Extinguishers

DRAWINGS ARE NOT TO SCALE



-  = FIRE EXTINGUISHER
-  = AED
-  = FIRE DEP. CONNECTION
-  = LOCK BOX
-  = FIRE ALARM CONTROL PANEL
-  = SPRINKLER HEADER
-  = SPRINKLER RISER
-  = WATER BOTTLE FILLER

DATE CREATED
11-29-17

ADDRESS
816 F Street

Square Feet
53850

JFK LIBRARY SECOND FLOOR

FLOOR
2